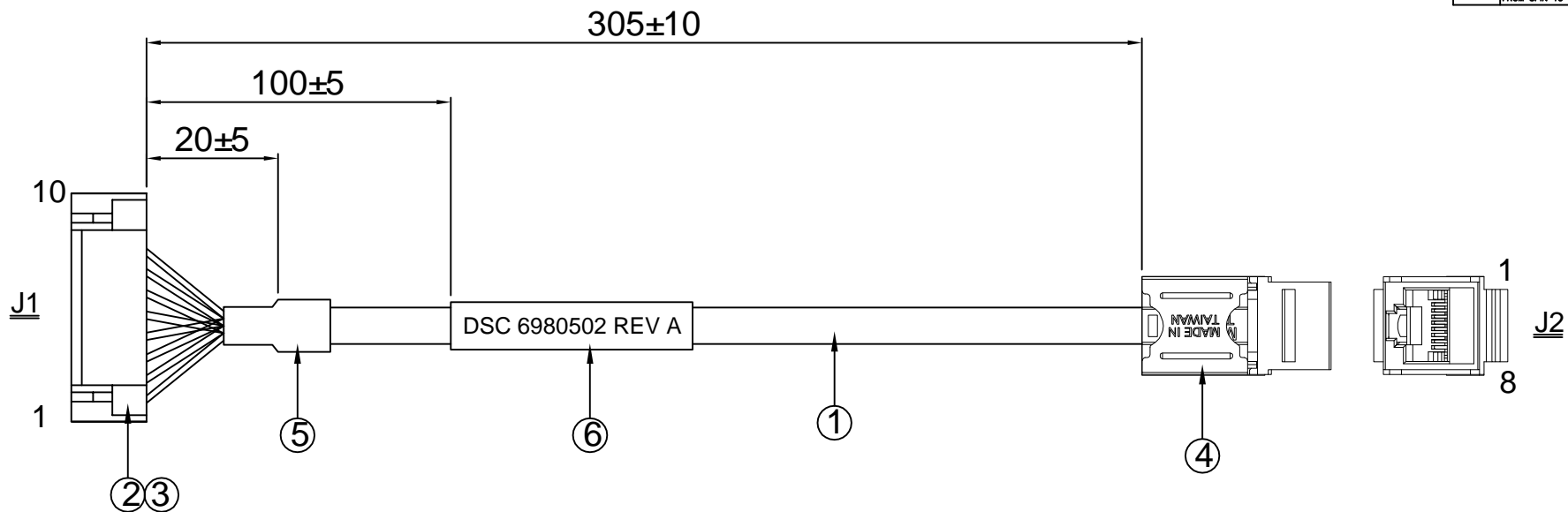
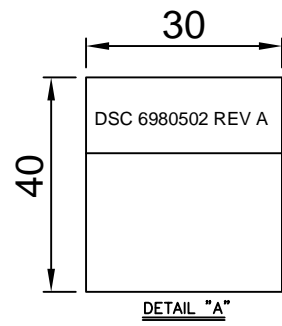


REV.	ECO. NO.	APPD
A	REL.	JHONNY 08/08'13
B	CHANGE J1 CONN. FROM 8PIN TO 10PIN	JHONNY 02/12'14



10	EMPTY	---	
9	EMPTY	---	
8	BROWN	TWISTED PAIR	8
7	BROWN/WHITE	TWISTED PAIR	7
6	BLUE/WHITE	TWISTED PAIR	5
5	BLUE	TWISTED PAIR	4
4	ORANGE	TWISTED PAIR	6
3	ORANGE/WHITE	TWISTED PAIR	3
2	GREEN	TWISTED PAIR	2
1	GREEN/WHITE	TWISTED PAIR	1
J1	WIRE COLOR		J2

WIRE CONNECTION TABLE



6	LABEL	1PC	W=30.0MM, L=40.0MM, CONTENT:SEE"A"	
5	H.S. TUBE	1PCS	I.D=ø6.0MM, UL224, COLOR:BLACK, L=15MM 125°C, 600V, VW-1 P/N:H-2(+) & RSFR-H 125°C, 300V, VW-1 P/N:H-2(CB) & RSFR(CB)	E255394 & E203950
4	KEYSTONE TOOLLESS	1PC	BODY: ABS, UL94V-0, JACK: 8PBC GOLD PLATED PCB: FR-4/UL-94V-0, IDC CAP: ABS, UL94V-0 IDC BODY: ABS, UL94V-0, IDC PIN: BRONZE&TINNED WIRE RANGE: #26~#22 EPN P/N: EKTVN-U1WH	
3	CONTACT	8PCS	MATERIAL: PHOSPHOR BRONZE, TIN PLATED WIRE RANGE: #30~#26, JST P/N: SSHL-002T-P0.2 WIRE RANGE: #32~#28, JCTC P/N: 11257TOP-2E	
2	10P HOUSING	1PC	MATERIAL: PBT, UL94V-0, COLOR: NATURAL WHITE PITCH: 1.25MM, 1X8 JST P/N: CHR-10V-S JCTC P/N: 11257H00-10P-L	E60389 E338796
1	CABLE	1PC	CAT 5E UTP #28x4PR(GREEN/WHITE, GREEN ORANGE/WHITE, ORANGE, BLUE/WHITE, BLUE BROWN/WHITE, BROWN, JACKET: BLACK, OD=ø5.5MM	E119932
No.	ITEM	Q'TY	DESCRIPTION	UL NO.

- NOTES:
- ALL DIMENSIONS ARE "MM".
 - ANY OPEN, MISWIRING, SHORT & INTERMITTENT ARE NOT PERMITTED.
 - Connection Resistance : 2.0Ω
Insulation Resistance : 20MΩ
Hi-POT Voltage : 300V DC
Hi-POT Duration : 10mS
 - THE PRODUCT MUST BE COMPLY WITH THE DIRECTIVE OF ROHS.
 - PACKAGE: 1PC/BAG.



X.:±	.XX:±	X°. :±	.XX°. :±	PART NO.(INTENDED USE) 6980502 REV A	TITLE: CABLE HARNESS, GIGE 1.25MM CONNECTOR TO RJ PANEL MOUNT
.X:±0.5	.XXX:±	.X°. :±	.XXX°. :±	APPD: JHONNY 02/12'14	DWG NO.: GL-GH663
				CHKD: WUZUJIAN 02/12'14	SCALE SHEET REV. NONE 1/1 B
				DR: YHTJH 02/12'14	

